



SUBMITTAL DATA INFORMATION

Job: _____ Engineer: _____ Contractor: _____ Rep: _____



SUN EQUINOX MAXI TANK — SINGLE COIL

FEATURES

Atmospheric Vessel: The water inside the storage tank is unpressurized, allowing for a long tank life.

Plastic Construction: The storage tank itself is made entirely of plastic, the inner and outer walls are impact-resistant Polypropylene (PP), the space in-between is filled with high heat insulating foam.

Low Heat Loss: The storage tank material (PP) and the all-round heat insulation using PU foam keep these heat losses to a minimum.

Solar Ready: The unit can accommodate any solar collector as long as it is drain back, the unit also functions as a drain back tank, so there is no need for an additional tank.

Water Hygiene: Domestic water is exclusively located in one pipe so that deposits of sludge, rust or other sediments, as can occur in containers with a large volume, are not possible. The water stored first is also taken out first (First-in-first-out principle).

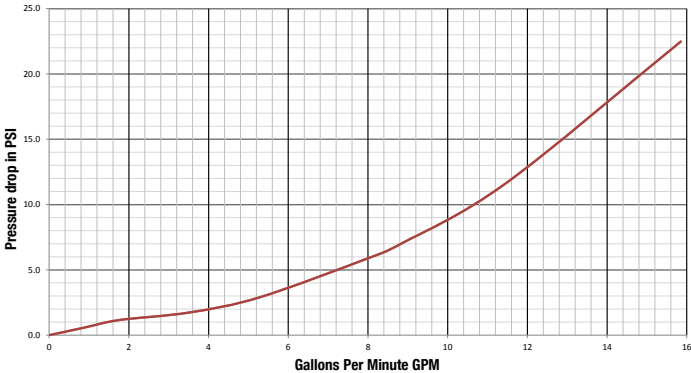
Low Scaling: On commissioning, the storage tank is filled with tap water without the use of additives. This water serves as the heat storage medium and is not consumed during operation. Thus, on the storage water side, the lime contained in the water can only be deposited once. All the heat exchanger pipes in the storage tank therefore remain free of lime scale. In addition, on the inner surface of the heat exchanger pipes, there is only a low tendency to scaling because of the high flow speeds when water is removed.

Modular Configuration: 1-20 units can be linked together and act as a large thermal storage cell.

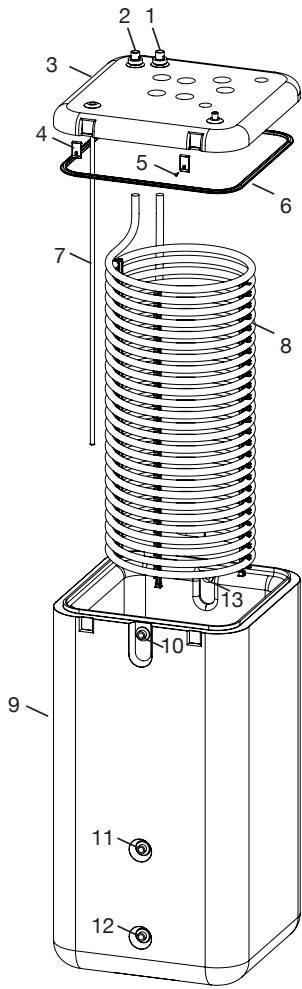
SPECIFICATIONS

Storage Tank Volume: 132 Gallons	Heat Exchanger Maximum Operating Pressure: 145 PSI
Empty Weight: 189 lbs	Heat Exchanger Material: Corrugated Stainless Steel
Weight: 1291 lbs	Heat Exchanger Surface Area: 64.58 (Sq. ft.)
Max. permissible storage tank water temperature: 185 °F	Average specific heat capacity: 2860 W/K
Heat Exchanger Length: 144 ft.	
Heat Exchanger Capacity: 7.66 Gallons	

HEAT EXCHANGER PRESSURE DROP OFF CHART



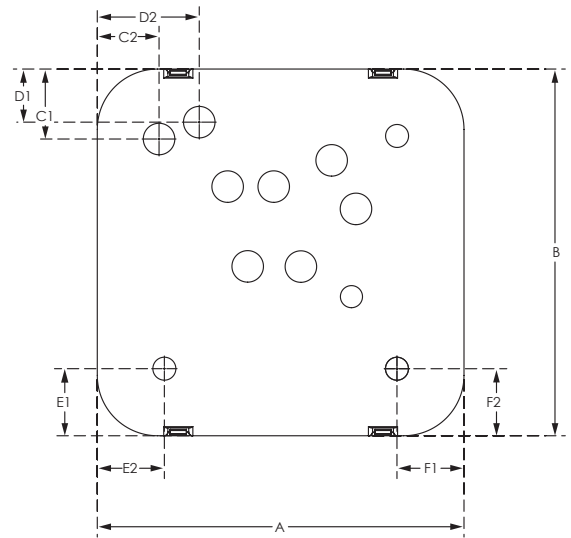
PARTS DIAGRAM



ITEM #	ITEM DESCRIPTION	NUMBER USED	MATERIALS OF CONSTRUCTION
1	Domestic Cold Water Supply	1	Brass
2	Domestic Hot Water Supply	1	Brass
3	Tank Lid	1	Polypropylene
4	Lid Fastener	4	Plastic
5	Fastener Screw	4	Stainless Steel
6	Rubber Seal	1	Rubber
7	Sensor Well	1	Aluminum
8	Heat Exchanger Coil	1	Stainless Steel
9	Tank	1	Polypropylene
10-12	Side Port Connections	3	Plastic
13	Overflow Port	1	Plastic

LID DIMENSIONS

ITEM #	DESCRIPTION	OFFSET (in.)
A	Width	31.10
B	Height	31.10
C1	Domestic Hot Water Supply	5.94
C2		5.24
D1	Domestic Cold Water Supply	4.50
D2		8.65
E1	Sensor well port	5.69
E2		5.69
F1	Sight glass port	5.69
F2		5.69



Actual size and weight may vary by configuration and manufacturing process.

DIMENSIONS DIAGRAM

ITEM #	DESCRIPTION	LENGTHS (INCHES)
A	Tank Height	60.62
B	Side Port	7.31
C	Side Port	21.25
D	Side Port	55.48
E	Overflow Port	55.48

Actual size and weight may vary by configuration and manufacturing process.

